

AMENDED PLAT LUCERO SUBDIVISION

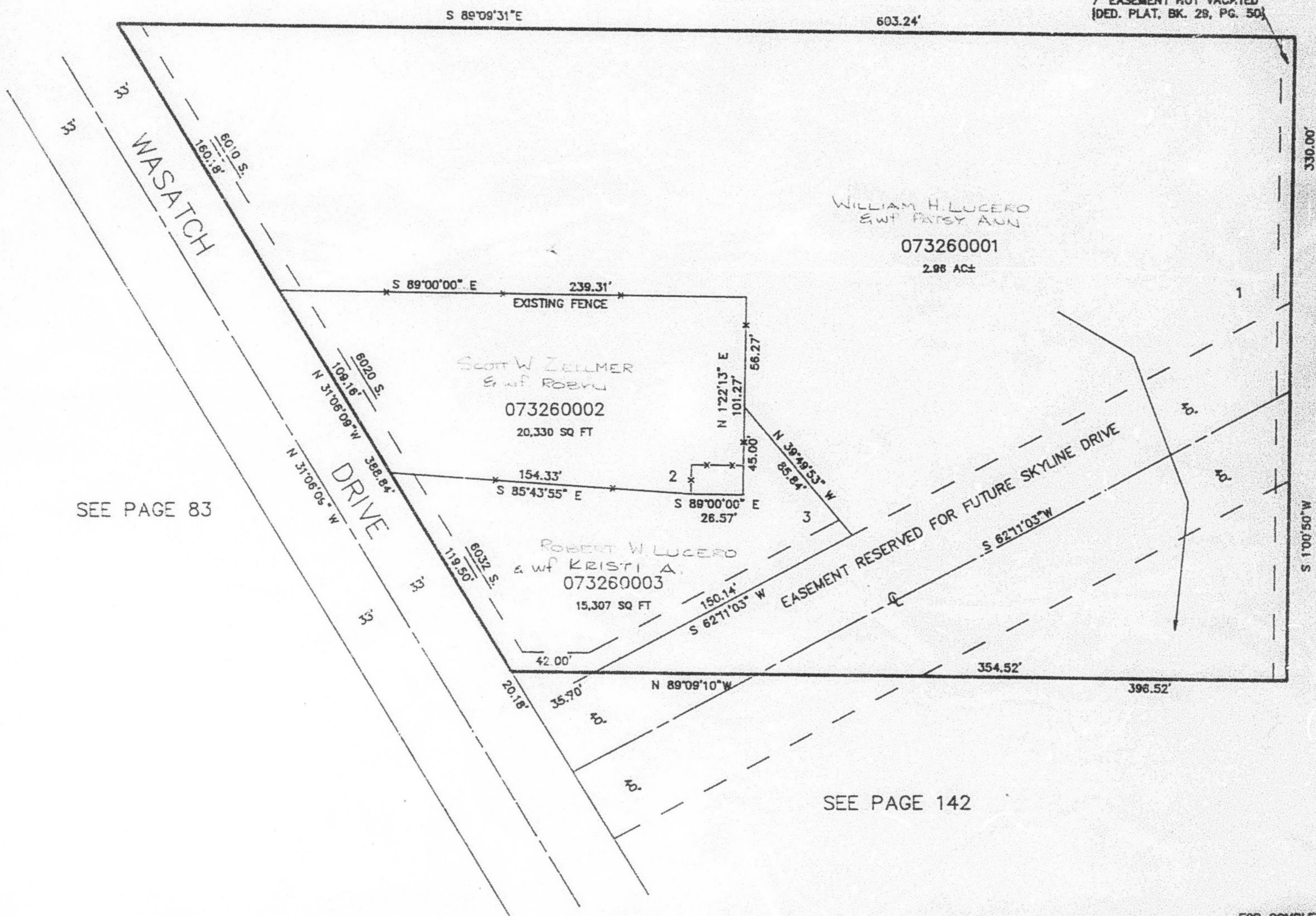
TAXING UNIT: 159

IN WEBER COUNTY

SCALE 1" = 50'

SEE PAGE 82

7' EASEMENT NOT VACATED
(DED. PLAT, BK. 28, PG. 50)



SEE PAGE 83

SEE PAGE 83

SEE PAGE 142

10' UTILITY & DRAINAGE EASEMENTS EACH
SIDE OF PROPERTY LINES AS INDICATED
BY DASHED LINES EXCEPT AS OTHERWISE
SHOWN.

FOR COMPLETE ENG DATA SEE
ORIGINAL DEDICATION PLAT IN
BOOK 28, PAGE 50 OF RECORDS.
FOR AMENDED DEDICATION SEE
BOOK 34, PAGE 96 OF RECORDS.